

1. Mardo

Key Features

- | | |
|--------------------------|-----------------------------------|
| ■ Tiny Home | ■ Loft for sleeping/extra storage |
| ■ Open plan living space | ■ 112 square foot |

Full Description

The Mardo was designed as a tiny home that can be built on wheels or on a foundation. It is perfect for a single person or couple looking to live smaller! This cabin cleverly maximises space. It has a small kitchen and bathroom, and an open plan living space with stairs leading up to the sleeping loft and storage space.

Room Dimensions

Cabin size: 14'0" x 8'0" (4.27 x 2.44m)

Open Plan Area: 8'0" x 8'0" (2.44 x 2.44m)

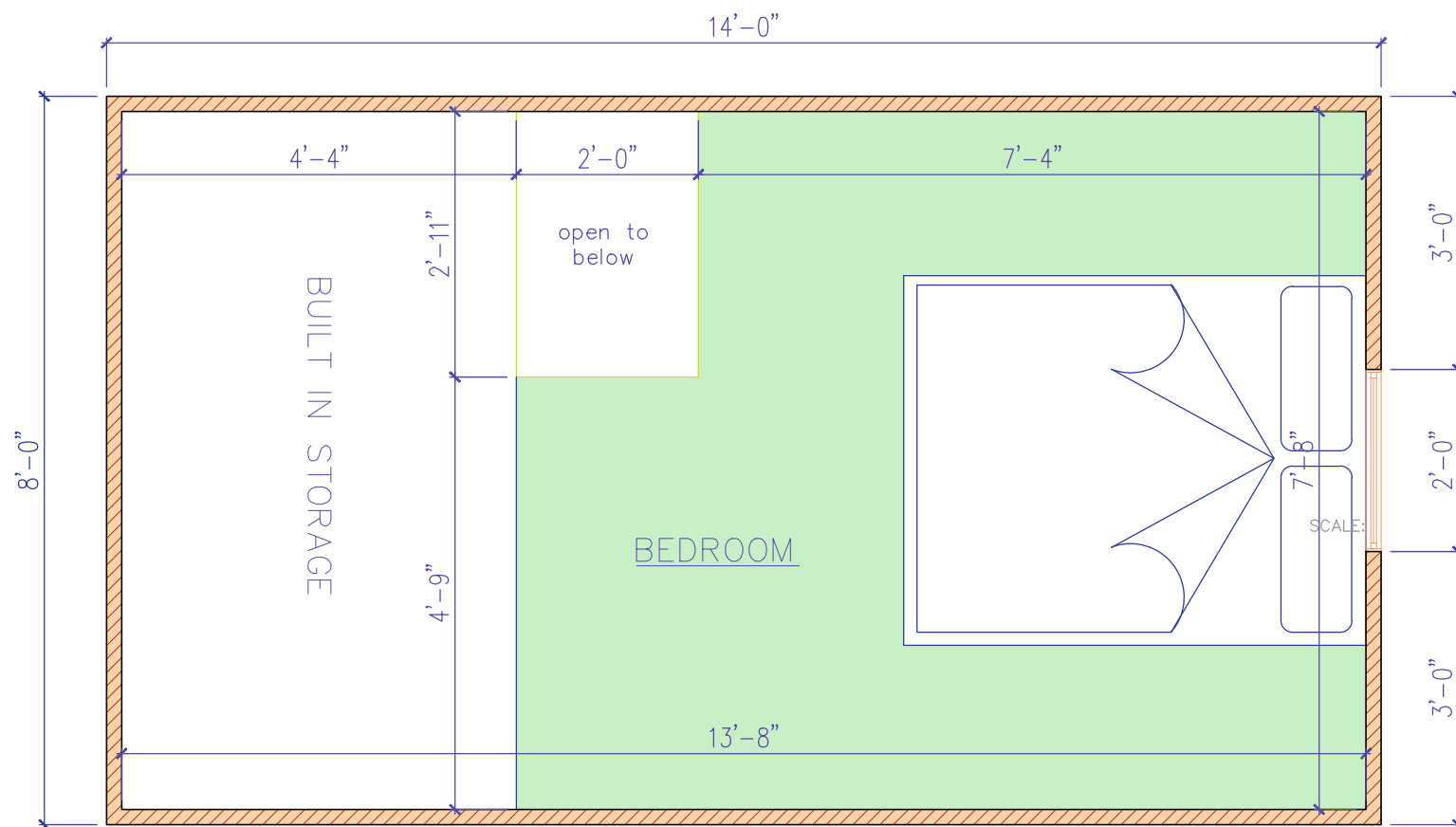
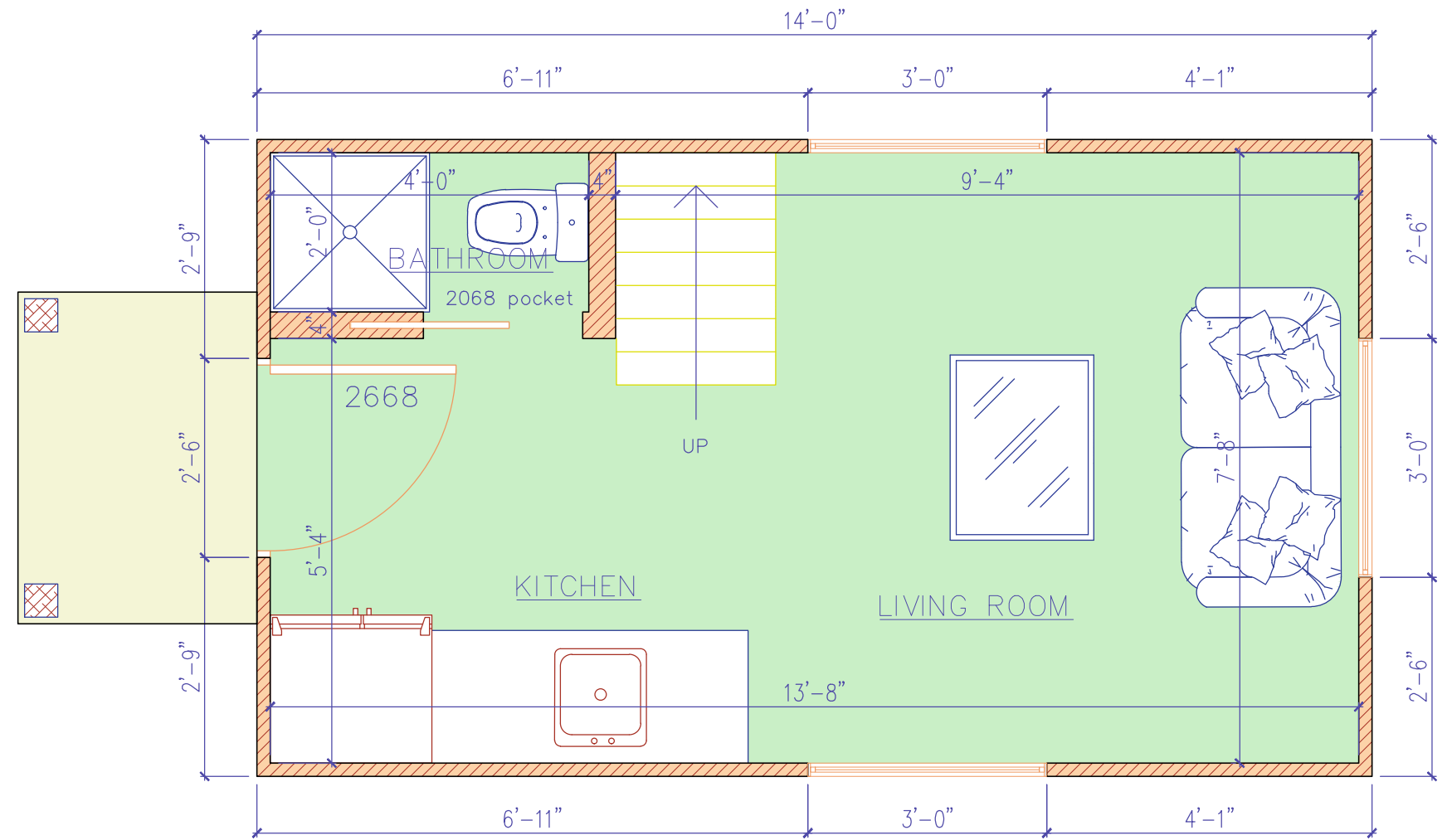
Kitchen Area: Approx. 6'0" x 4'0" (1.83 x 1.22m)

Bathroom: 4'0" x 2'0" (1.22 x 0.61m)



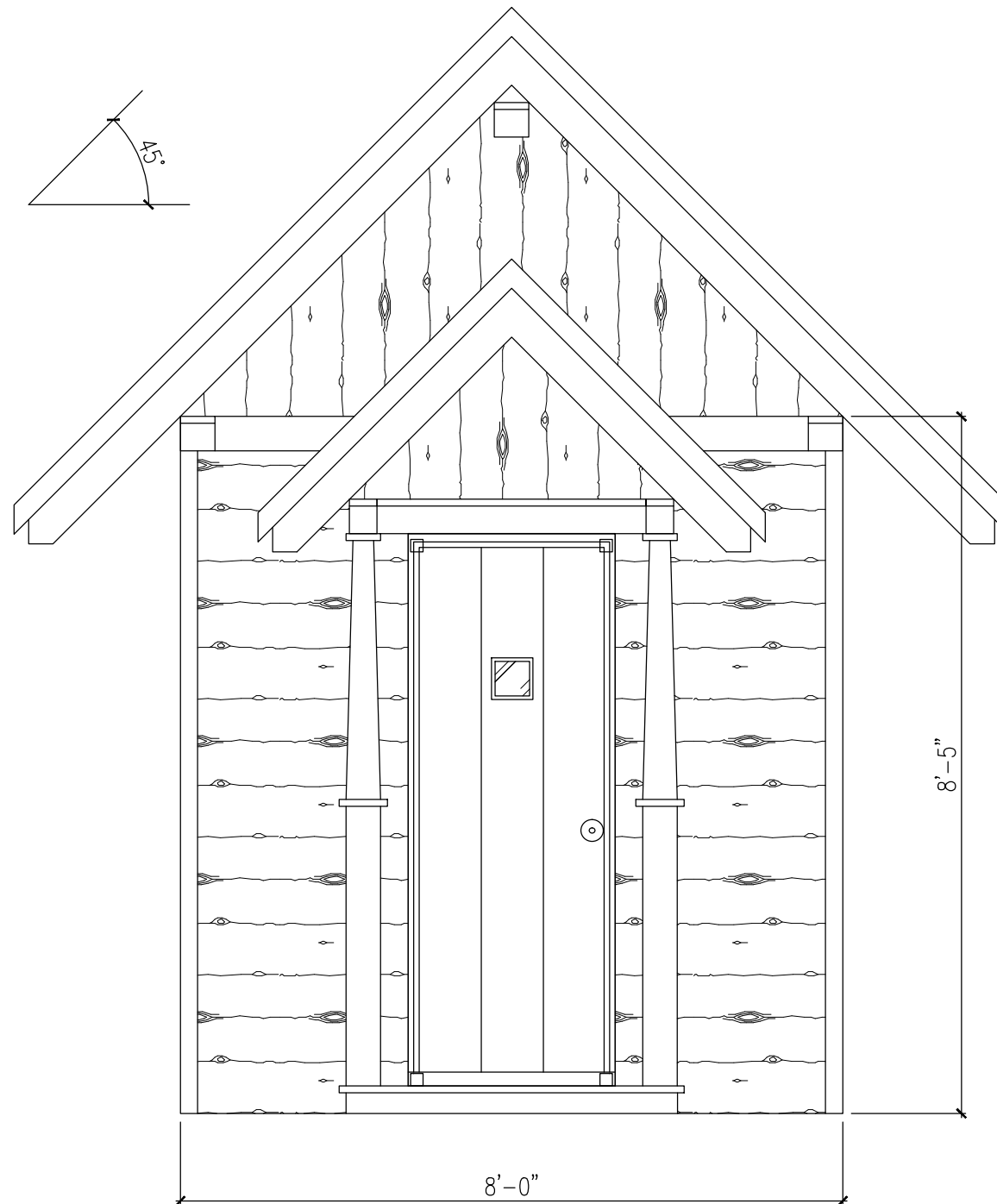
AREA SUMMARY:

GROUND FLOOR.....100 SQFT.
 MEZZANINE.....68 SQFT.
 TOTAL AREA.....168 SQFT.



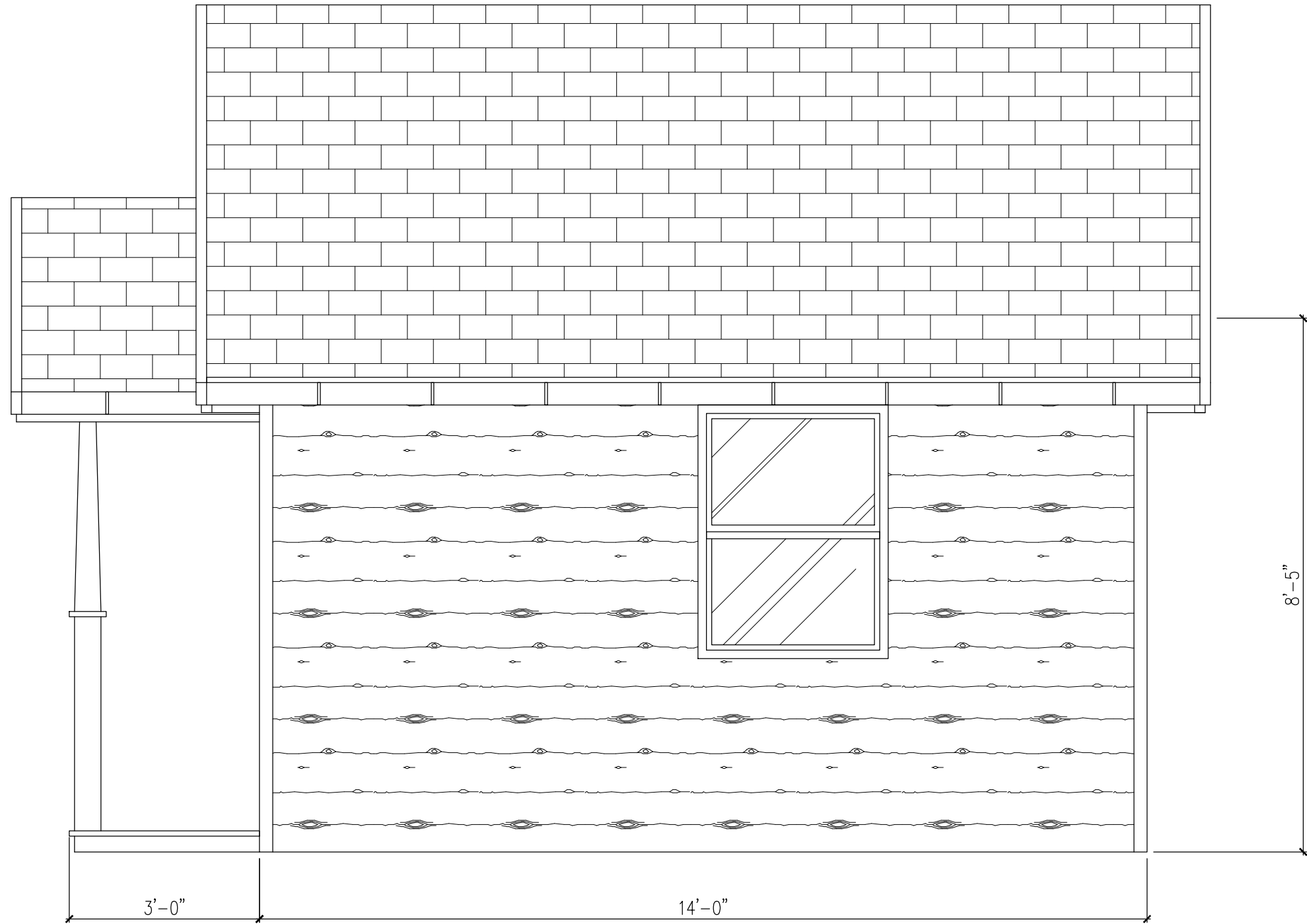
1 GROUND/MEZZANINE FLOOR PLAN
 SCALE: 1/2" = 1'-0"

PROJECT:	MARDO	
DWG TITLE:	PAPER SIZE:	SHEET No:
GROUND FLOOR PLAN	17 X 11 inches	1 / 3
SCALE:	DATE:	
1/2" = 1'-0"	01 / 06 / 16	
PROJECT No. 044 / 16		



2 FRONT ELEVATION
SCALE: 1/2" = 1'-0"

PROJECT:	MARDO	
DWG TITLE: FRONT ELEVATION	PAPER SIZE: 17 X 11 inches	SHEET No: 2 / 3
SCALE: 1/2" = 1'-0"	DATE: 01 / 06 / 16	
PROJECT No. 044 / 16		



3 RIGHT ELEVATION
SCALE: 1/2" = 1'-0"

PROJECT:	MARDO	
DWG TITLE: RIGHT ELEVATION	PAPER SIZE: 17 X 11 inches	SHEET No: 3 / 3
SCALE: 1/2" = 1'-0"	DATE: 01 / 06 / 16	
PROJECT No. 044 / 16		