

2. Calderton

Key Features

- Tiny Home
- Rustic log sided cabin
- One bedroom with built in storage
- Open plan living space
- 364 square foot

Full Description

The Calderton was designed towards the larger end of the scale of a tiny home with a floor space of 364 square foot. It has a small L-shaped kitchen with a bathroom opposite complete with a bath. The bedroom has inbuilt storage. The size of this cabin makes it a perfect for a cosy getaway, and is easy to clean and maintain.

Room Dimensions

Cabin size: 12'0" x 32'0" (3.66 x 9.75m)

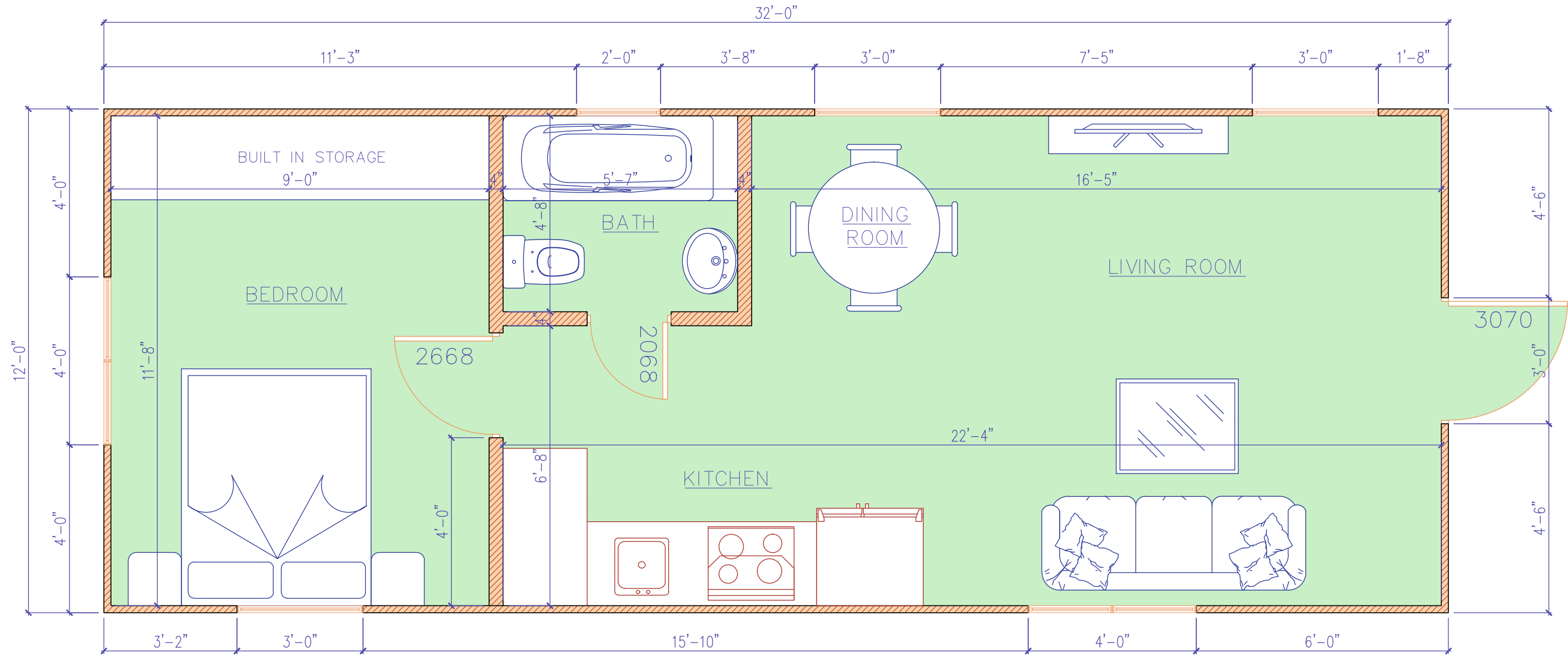
Open Plan Area: Approx. 12'0" x 17'5" (3.66 x 5.31m)

Bedroom: 12'0" x 9'0" (3.66 x 2.74m)

Bathroom: 5'7" x 5'0" (1.70 x 1.52m)

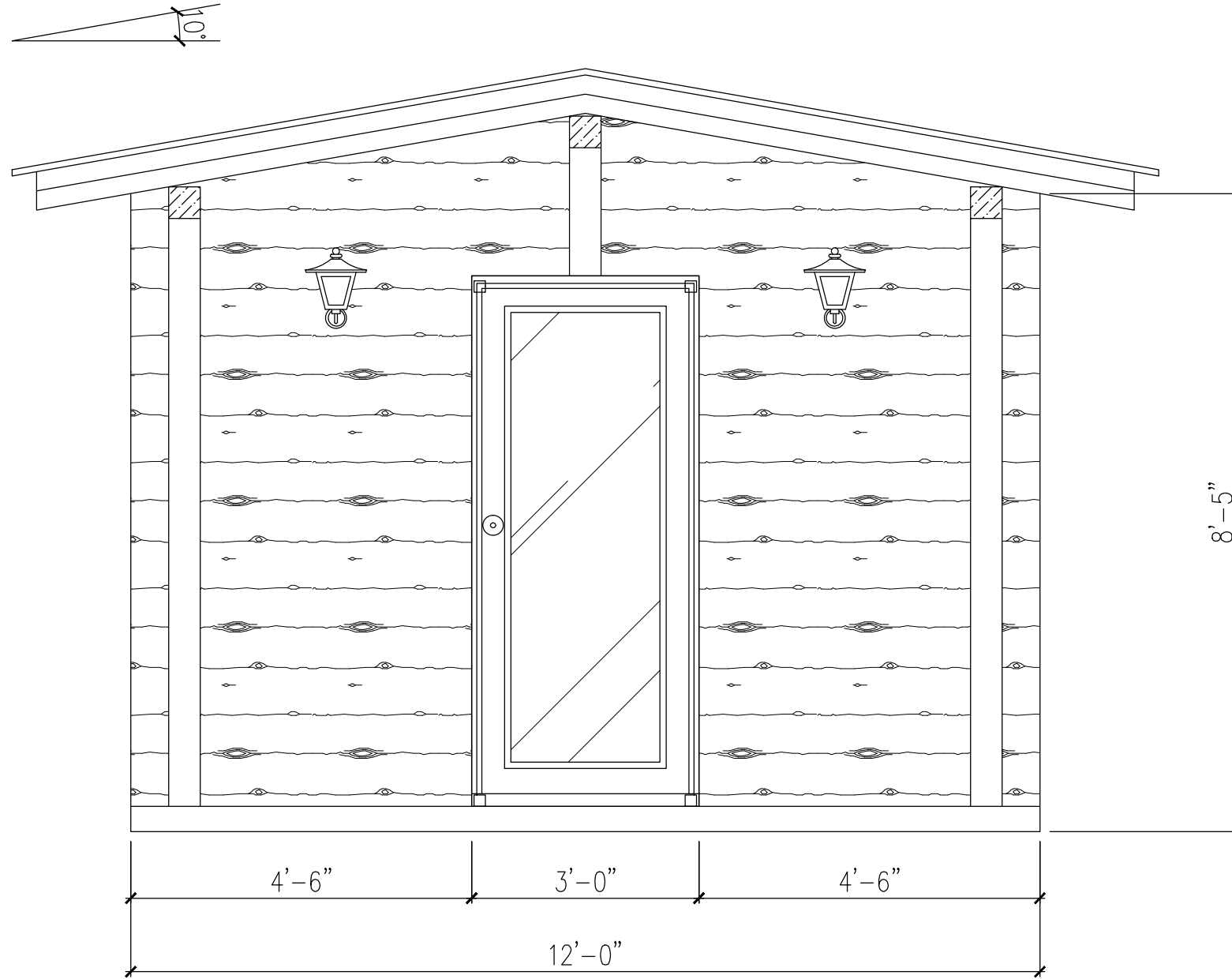
AREA SUMMARY:

GROUND FLOOR.....364 SQFT.



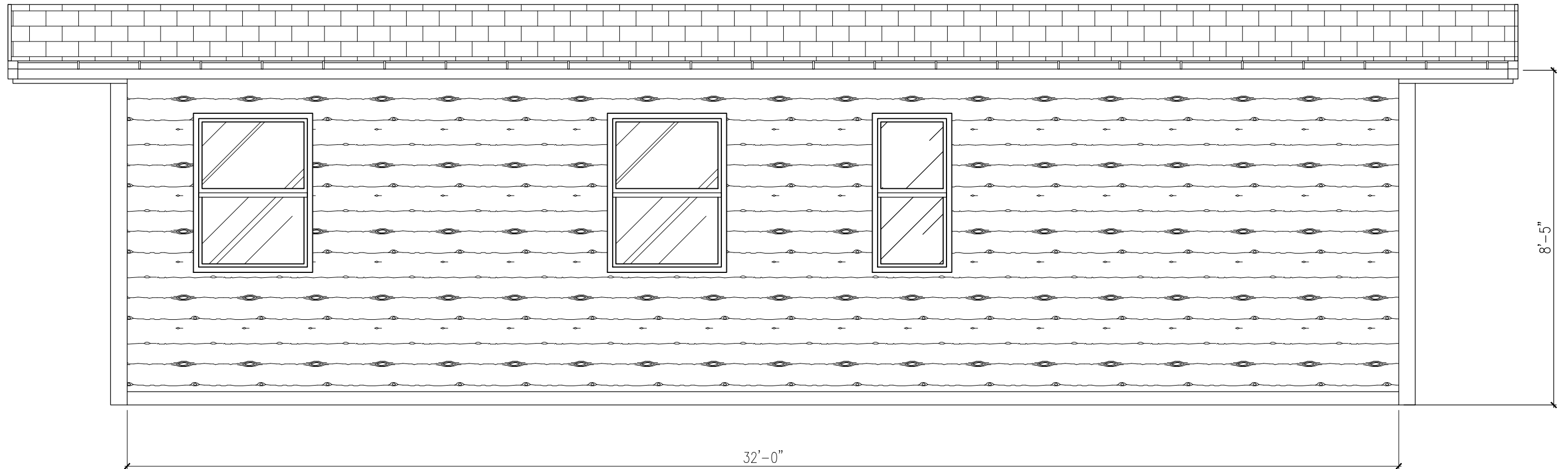
1 GROUND FLOOR PLAN
SCALE: 3/8" = 1'-0"

PROJECT:	LOG CABIN	
DWG TITLE:	PAPER SIZE:	SHEET No:
GROUND FLOOR PLAN	17 X 11 inches	1 / 3
SCALE:	DATE:	
3/8" = 1'-0"	26 / 05 / 16	
PROJECT No. 042 / 16		



2 FRONT ELEVATION
SCALE: 1/2" = 1'-0"

PROJECT:	LOG CABIN	
DWG TITLE: FRONT ELEVATION	PAPER SIZE: 17 X 11 inches	SHEET No: 2 / 3
SCALE: 1/2" = 1'-0"	DATE: 26 / 05 / 16	
PROJECT No. 042 / 16		



3 RIGHT ELEVATION
SCALE: 3/8" = 1'-0"

PROJECT:	LOG CABIN	
DWG TITLE: RIGHT ELEVATION	PAPER SIZE: 17 X 11 inches	SHEET No: 3 / 3
SCALE: 3/8" = 1'-0"	DATE: 26 / 05 / 16	
PROJECT No. 042 / 16		